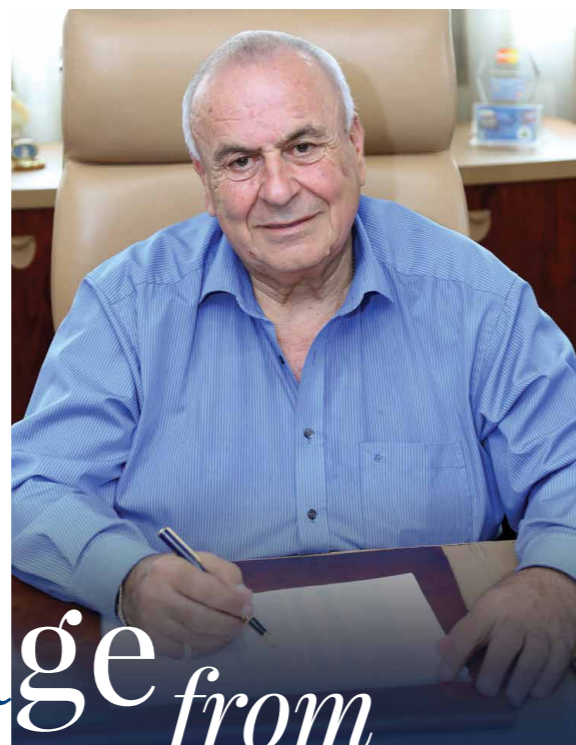




ENERGY, MADE BETTER

Table of Contents

Message from the Founder	2
Company Overview	4
Who We Are	5
Our Guiding Principles	6
A Journey of Growth	8
Leadership and Governance	10
Leadership Team	10
Corporate Governance	14
Our Workforce	15
Business Lines	16
Trading and Supply	17
Service Stations Network	20
Fuel Services	21
Non-Fuel Services	22
Corporate Services	28
LPG Solutions	30
Equipment and Solutions	31
Aviation	31
Renewable Energy	31
Operational Efficiency and Safety Standards	32
Transportation	33
Distribution	33
Quality, Health, Safety, and Environmental (QHSE)	34
Regional Expansion	36
United Arab Emirates (UAE)	36
Kingdom of Saudi Arabia (KSA)	38
Kingdom of Jordan	40
Our Sustainability	42
Our Approach	42
Four Pillars of Commitment	44
Expanding Horizons for a Sustainable Future	46
Sustainability Metrics & Reporting	47
Future Outlook	48
Partnerships and Recognition	49
Awards and Certifications	50
Contact Us	52



Message *from* the Founder

Dear Valued Stakeholders,

Reflecting on the Issa Petrol Trade (IPT) journey since its founding in 1970 fills me with immense pride and a profound sense of responsibility. What began as a singular vision to establish a service station in Amchit, Lebanon, has grown into a leading energy conglomerate with a significant presence across the Middle East.

Our mission has focused on resilience. We view crises as opportunities to grow stronger and redefine the energy sector through unwavering innovation, excellence, and integrity.

Over the past five decades, IPT has navigated numerous challenges and milestones. Each experience has reinforced our dedication to superior customer service and technological advancement, allowing us to adapt and evolve continuously to meet the demands of a dynamic market. Today, IPT stands as a beacon of trust and quality in the energy sector, demonstrating our superior presence in Lebanon and the region.

Our core values of integrity, safety, agility, and innovation form the foundation of our operations. These principles guide us in upholding the highest international standards. Through our Integrated Management System (IMS), which combines quality, health and safety, and environmental management, we ensure consistent value creation while protecting the well-being of our employees, customers, and the environment.

Sustainability is a cornerstone of our corporate strategy. Our pioneering efforts in renewable energy and eco-friendly products reflect our commitment to environmental stewardship. By integrating Environmental, Social, and Governance (ESG) principles into our business practices, we aim to set a benchmark for sustainable development and responsible corporate governance.

IPT's success is a testament to the dedication and talent of our team, whose unwavering commitment to our core values has been instrumental in our growth and achievements. Together, we will continue to drive innovation, expand our horizons, and contribute positively to the communities we serve.

Looking ahead, IPT is well-positioned to embrace future challenges and opportunities. We remain resolute in our mission to provide premier energy solutions while upholding our enduring commitment to excellence, innovation, and sustainability. I sincerely thank our stakeholders for their continued trust and support.

Sincerely,

MICHEL ISSA
Founder, Issa Petrol Trade (IPT)



Company Overview



Who We Are

IPT stands as a pillar in the Lebanese energy sector, with a strong legacy specializing in the import, storage, and distribution of essential energy resources. Over the years, we have expanded our offerings beyond traditional energy solutions to include electric vehicle (EV) charging stations, solar energy systems, and waste management initiatives. These efforts underscore our commitment to sustainability and our role in driving the transition towards a greener future.

With an extensive network of over 250 service stations across Lebanon, IPT has established itself as a reliable provider, ensuring that our energy solutions are accessible to consumers throughout the country. Our comprehensive approach allows us to serve diverse consumer needs and various market segments, always with sustainability at the core of our operations.

In addition to our strong presence in Lebanon, IPT has strategically expanded its operations into the UAE, where we have established key facilities in Sharjah and Hamriyah. These locations, equipped with state-of-the-art technologies, enhance our capacity for efficient and sustainable energy management. Our UAE operations align with our commitment to innovation and environmental responsibility, reinforcing IPT's role as a leader in the regional energy sector.

Building on this regional momentum, IPT has extended its footprint into the Kingdom of Saudi Arabia (KSA), anchoring its strategic entry into the Kingdom in alignment with Vision 2030. Operating under a partnership with Tas'helat Marketing Company (TMC) – ARAMCO and TotalEnergies Joint Venture – IPT brings forward its service quality, safety culture, and customer-centric model while preparing service stations for future mobility, including EV charging-ready sites.

Further expansion into the Hashemite Kingdom of Jordan marks another milestone in IPT's regional journey. Through a strategic partnership with TotalEnergies Marketing Jordan, IPT will manage and operate select service stations, applying a disciplined, performance-driven model focused on reliable forecourt operations, retail best practices, and customer solutions. Select service stations are being equipped with EV charging-ready layouts to anticipate the growing demand for low-carbon mobility.

Through strategic partnerships and a dedication to premium service, IPT continues to deliver innovative, sustainable solutions that enhance customer experiences and ensure we remain at the forefront of the energy industry. The activities of the IPT Group are supported by a direct workforce of over 600 employees, with approximately 1,000 additional employees within our franchise network. Each team member upholds our foundational values of integrity, safety, agility, and innovation, which are central to our operations, ensuring efficient and reliable delivery, promoting good governance, and supporting sustainable practices.

Our Guiding Principles

Vision Statement

- Top-of-mind in providing better and trusted energy.



Mission Statements

- Become one of the leaders in the energy market.
- Provide clean, affordable, and sustainable fuel.
- Adapt to change in a critical business environment and survive crises.
- Earn the reputation of being an innovative, pioneering, and responsible energy company.



Business Principles

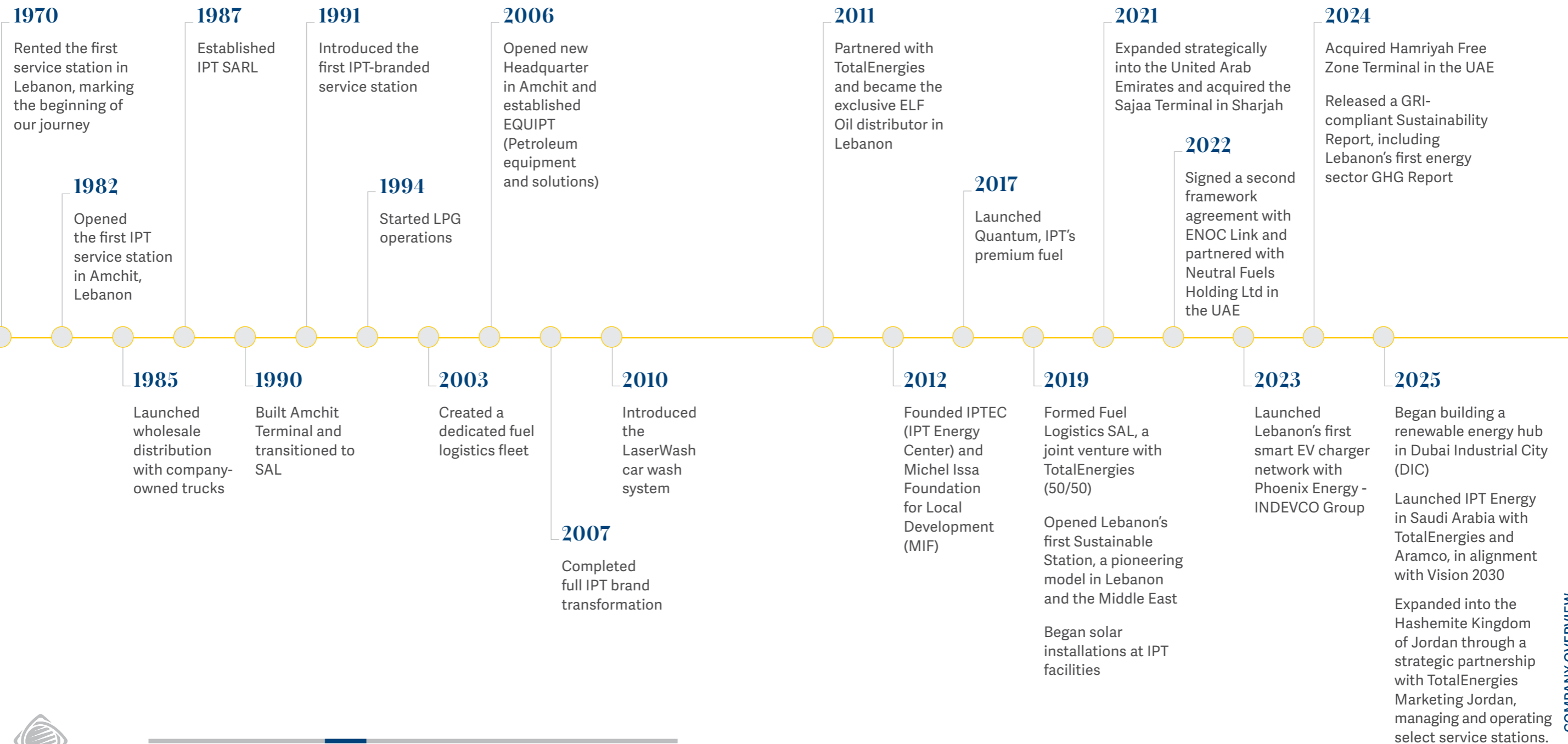
- Commitment to QHSE (Quality, Health, Safety, and Environment) policy and procedures.
- Integration of sustainable development and ESG (Environmental, Social, and Governance) factors into our core business.
- Differentiation and uniqueness of offerings.
- Integrated Management System (IMS) along the value chain.
- People and organization excellence.
- Customer-focused and oriented.
- Compliance with local legislation and international standards.



Value Statements

- Be a partner in developing the national economy.
- Set the example of corporate behavior in terms of good governance and social responsibility.
- Follow the best business practices based on integrity, trust, respect, transparency, and accountability.





Leadership *and* Governance

Leadership Team

IPT Group is a dynamic conglomerate uniting diverse corporations that operate in synergy to drive the group's success. This unified structure fosters an environment where each entity excels on its own merits and contributes to the group's collective success.

IPT GROUP HOLDING SAL

IPT Group Holding SAL brings together a portfolio of specialized entities that collectively strengthen the Group's role as a leading energy player in Lebanon and the region. Each company complements the other, creating a fully integrated business model.

Fuel Logistics CO SAL

A 50/50 joint venture with TotalEnergies Lebanon, offering logistics services and petroleum product supply solutions.

Lebanon Energy SAL

Operator of an additional strategic storage terminal for gasoline and diesel in Amchit.

EVzone SAL

A joint venture with Phoenix - Indevco Group, created to develop and manage a nationwide network of smart EV chargers, advancing the future of sustainable mobility in Lebanon.

IPT SAL

The core entity of the Group, responsible for the importation, storage, and distribution of petroleum products.

LGS SAL

Dedicated to the direct management and operation of IPT-owned service stations.

EQUIPT SAL

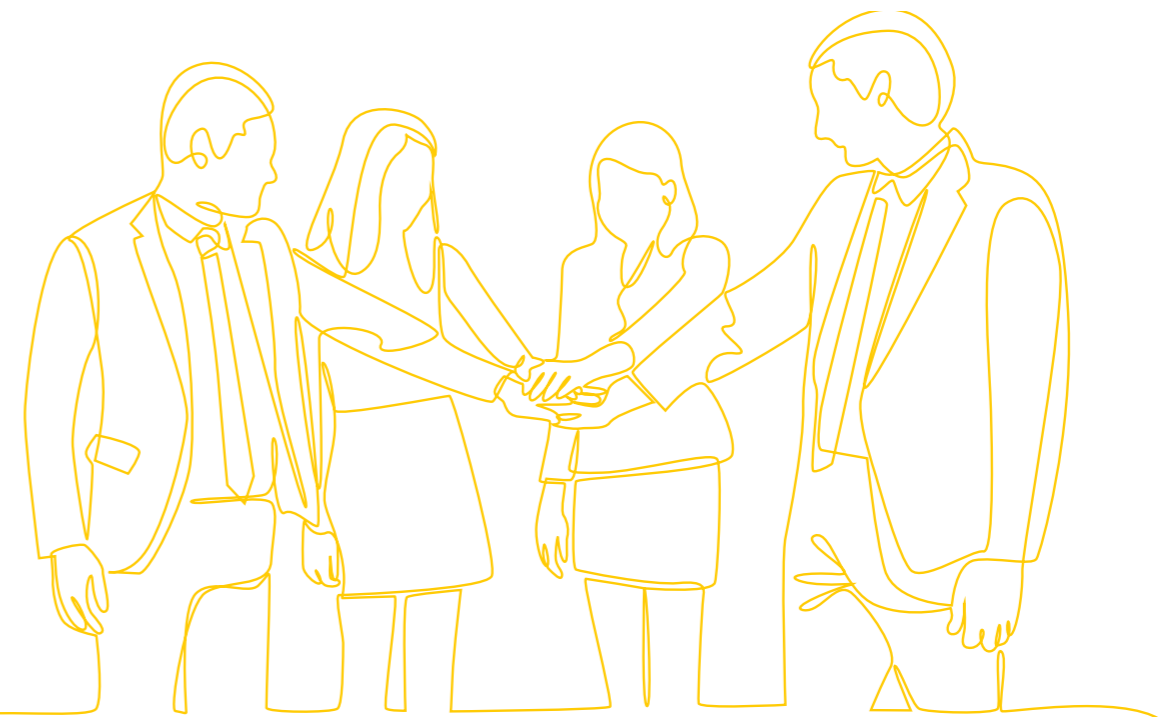
Provider of petroleum equipment and service station solutions, supporting operational excellence across the network.

JETTCO SAL

Licensed Jet A1 fuel marketer and operator at Beirut International Airport.

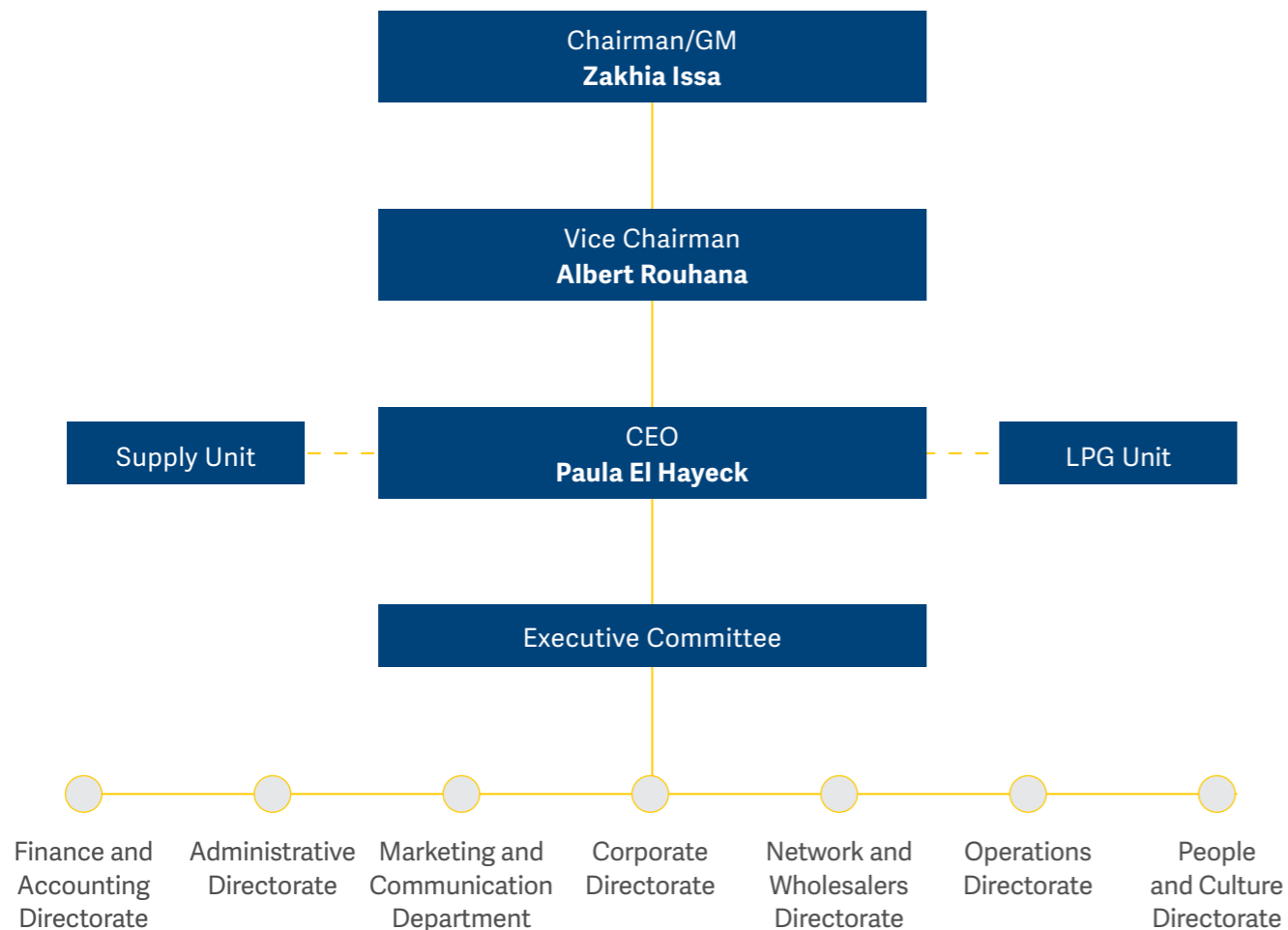
At the core of IPT's organizational structure is a leadership framework that ensures effective decision-making and management across all levels of the group. At its pinnacle is the IPT Group Holding Board, which provides strategic direction and oversight, playing a critical role in ensuring that all decisions align with IPT's long-term vision for sustainable growth.

Supporting the Board's strategy and leading the dynamic operating team in Lebanon is Mrs. Paula Hayek, the Chief Executive Officer (CEO). She is pivotal in steering the group towards sustainable growth, innovation, and operational excellence. Under her leadership, IPT remains agile and well-positioned to navigate the ever-evolving energy industry landscape.





IPT Group Holding - Org Chart



Executive Committee

Assists the CEO in shaping strategic direction and policy decisions, ensuring IPT remains a leader in the energy sector.

Supply Unit

Manages procurement and supply chain processes.

LPG Department

Focuses on the distribution and management of liquefied petroleum gas.

Administrative Directorate

Supports administrative functions, including Legal and HR.

Finance and Accounting Directorate

Responsible for financial planning, analysis, and reporting, ensuring financial stability.

Marketing and Communication Department

Responsible for shaping and owning the brand across multiple business units, driving strategic communication, branding, and digital engagement to enhance market presence, foster audience interaction, and position key initiatives as industry leaders.

Network and Wholesalers Directorate

Manages IPT's fuel station network in Lebanon and fuel distribution to wholesalers.

Corporate Directorate

Oversees commercial operations and market strategies, enhancing IPT's market presence.

Operations Directorate

Ensures operational efficiency and effectiveness, contributing to overall performance.

People and Culture Directorate

Leads talent strategy, employee engagement, learning and development, and organizational culture, ensuring HR initiatives align with IPT's strategic goals to foster a high-performance, inclusive workplace.

Together, these directorates and departments form a cohesive structure under the CEO's leadership, enabling IPT to maintain its leadership position and pursue long-term success.

This approach ensures high standards of quality, compliance, and operational efficiency, fostering a dynamic and collaborative work environment that adapts swiftly to changes in the industry landscape.

Corporate Governance

IPT's unwavering commitment to exemplary corporate governance underpins our success. We prioritize transparency and accountability, adhering to the highest ethical standards. Our governance department ensures compliance with regulations and best practices, fostering a culture of integrity and trust.

We are dedicated to Environmental, Social, and Governance (ESG) initiatives, implementing sustainable practices and making responsible decisions for the benefit of all stakeholders. Our Quality Management System (QMS) aligns with international standards, ensuring excellence in products and services.

Regular internal audits evaluate the effectiveness of our controls and processes, while Health, Safety, and Environment (HSE) audits ensure compliance with safety protocols and environmental regulations. These measures prioritize the well-being of both our employees and the environment.

Our QHSE policy reinforces our commitment to exceeding standards across operations, promoting continuous improvement and responsibility. We lead in sustainable and ethical business practices with anti-corruption measures, risk management protocols, fair compensation, and a transparent tax strategy, underscoring our dedication to excellence.

Our Workforce

At the heart of IPT Group's success is a dedicated team of over 500 employees who embody our core values: integrity, safety, agility, and innovation. These values guide our operations, ensuring efficient service delivery and a commitment to governance and sustainability. Our workforce's diverse talents drive IPT's growth and achievements.

Promoting Diversity and Inclusion

IPT is committed to diversity and inclusion, with women representing 41% of our workforce and 78% of our leadership team, including the CEO. Moreover, 36% of employees are under thirty, bringing fresh perspectives and energy. This inclusive environment enriches our workplace, encouraging diverse contributions.

Grow with IPT Training and Learning Academy

Recognizing the link between our success and our people's growth, IPT invests in employee development. The Grow with IPT learning and training academy offers tailored programs to empower employees and participants, covering leadership, innovation, and safety. This initiative ensures IPT remains a leader in the energy sector, driving innovation and sustainability.





Trading and Supply

IPT's trading and supply division is crucial to our operations, facilitating the import, storage, and distribution of premium fuel and related products.

IMPORTATION

IPT sources high-quality hydrocarbons and petroleum products from reputable global suppliers. We import premium gasoline grades (Gasoline 98, Gasoline 95) and Diesel Oil. In 2019, IPT established a strategic partnership with TotalEnergies Lebanon, a leading international fuel company with over 80 years in the Lebanese market.

This collaboration resulted in the formation of "Fuel Logistics Company SAL," a joint venture equally owned by both companies. It specializes in logistics services and the supply of petroleum products for IPT and TotalEnergies Liban, organizing annual supply tenders to optimize vessel flow and ensure product quality per Lebanese standards. Products are transported directly from refineries to IPT's and Lebanon Energy's storage terminals in Amchit, Lebanon.



Business Lines



STORAGE

IPT's advanced storage facilities maintain the highest standards of fuel integrity and quality. Key facilities include:

Two Gasoline and Diesel Terminals - Amchit

Fully equipped terminals; IPT Terminal and Lebanon Energy Terminal; to meet all operational and safety requirements, complying with international and domestic safety standards.

Dedicated sea lines facilitate efficient berthing and unloading of vessels.

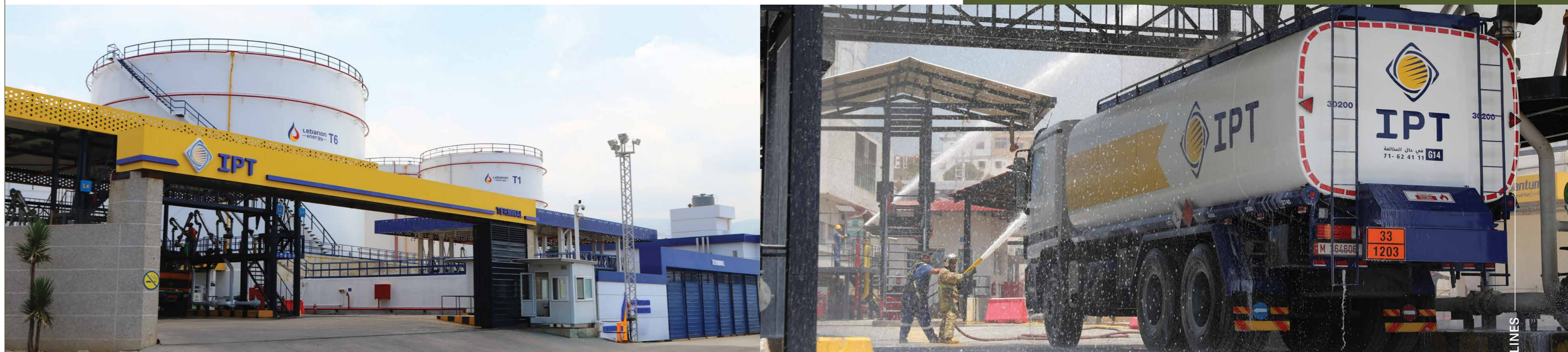
Total storage capacity of 50,000 CBM across 24 tanks, all conforming to API, ASTM, and NFPA standards.

Lubricants Warehouse - Amchit

Ensures the availability of ELF high-quality lubricants.

Equipt Showroom - Amchit

Supports the distribution of petroleum and service stations' equipment and solutions.



SUPPLY LOGISTICS

Robust Infrastructure

IPT ensures efficient and reliable product delivery through a sophisticated logistics framework, sustaining fuel availability across diverse markets, even under challenging conditions.

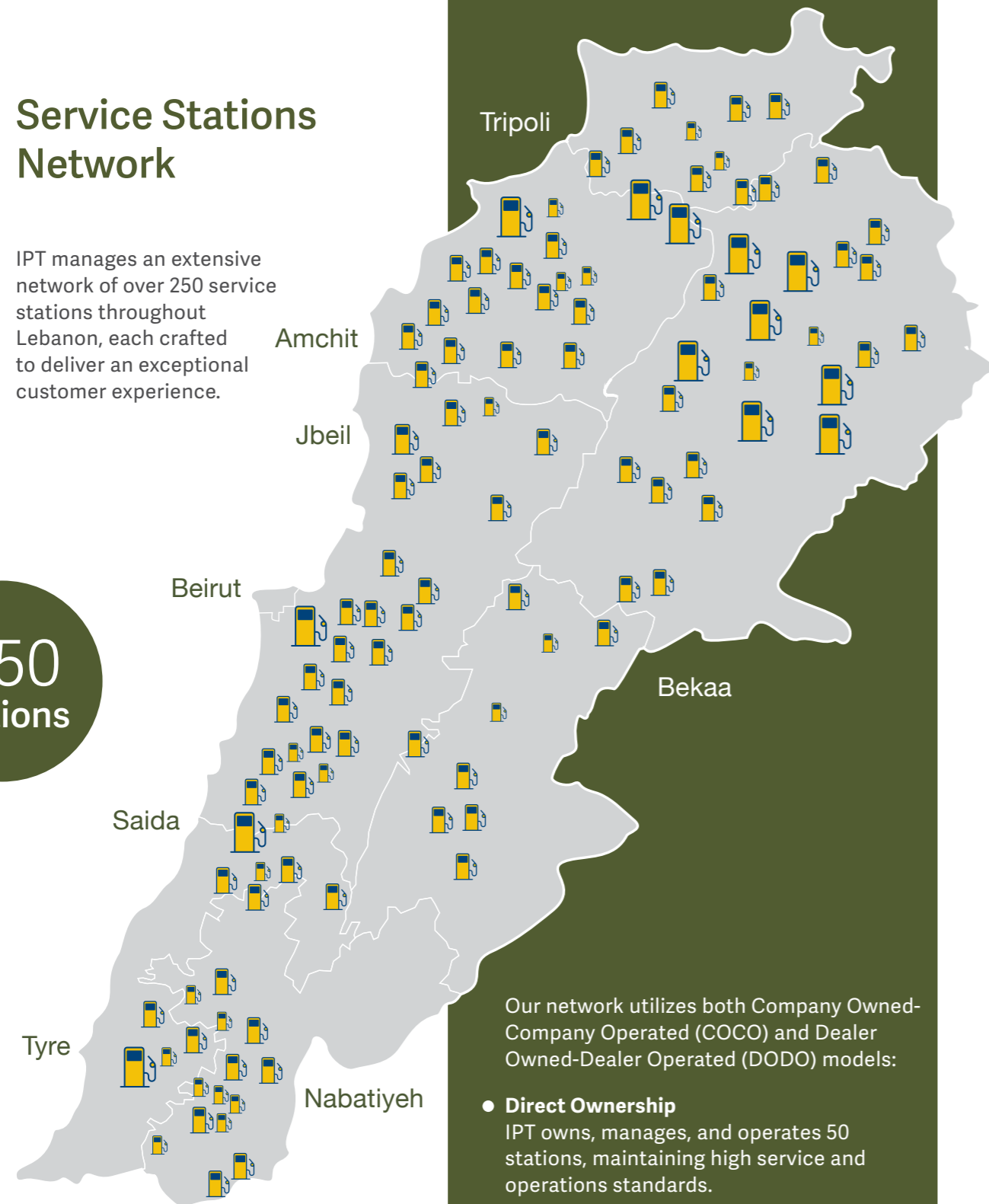
Fleet Operations

A fully owned and operated fleet of over **50 vehicles** exemplifies our commitment to service excellence and reliability in trading and supply.



Service Stations Network

IPT manages an extensive network of over 250 service stations throughout Lebanon, each crafted to deliver an exceptional customer experience.



+250
Stations

Our network utilizes both Company Owned-Company Operated (COCO) and Dealer Owned-Dealer Operated (DODO) models:

- Direct Ownership**
 IPT owns, manages, and operates 50 stations, maintaining high service and operations standards.
- Franchise Excellence**
 The remaining stations operate under a franchise model, adhering to strict operational guidelines to ensure consistent service quality and excellence across the network.



IPT stations are equipped to offer:

FUEL SERVICES

Gasoline

IPT offers premium Gasoline 95 and Gasoline 98, both of which conform to meet both local and international standards. These products exemplify our commitment to providing high quality fuel services to meet the diverse needs of the market.

Diesel

Engineered with the environment in mind, IPT Diesel is designed to significantly reduce fuel consumption and minimize environmental impact. By meeting Euro 4 and Euro 5 standards, it not only enhances vehicle performance but also supports eco-conscious motorists in their quest for sustainable driving solutions.

Fuel Self-Service

IPT was the first to introduce Self-Service stations in Lebanon, providing customers with a user-friendly refueling experience. This initiative highlights our commitment to innovation and customer convenience, offering greater flexibility for our clientele.



NON-FUEL SERVICES

IPT stations are multifaceted hubs offering diverse non-fuel services to enhance every customer visit.

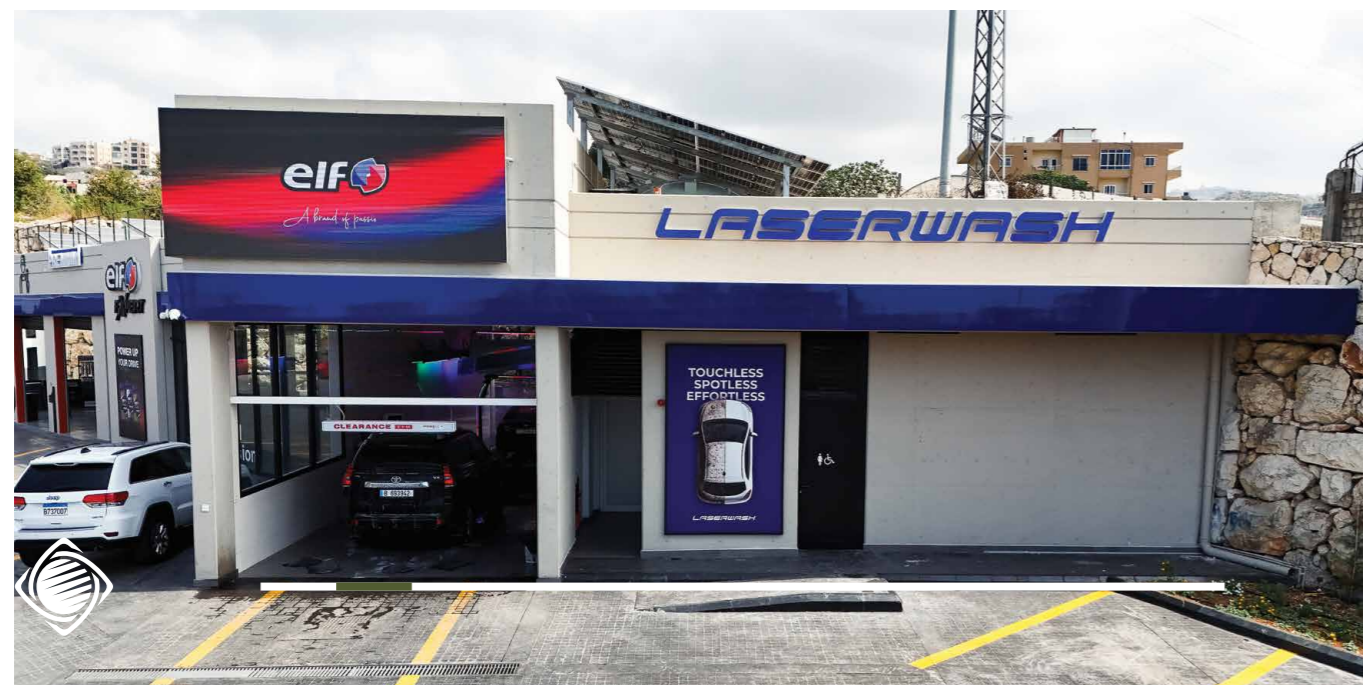
ELF Lubricants

As Lebanon authorized distributor since 2011, IPT provides ELF's premium lubricants for various engine types. Our renewed 2023 contract with TotalEnergies Marketing UAE ensures continued delivery of top-tier products backed by industry expertise and innovation.



LaserWash

IPT features LaserWash, a cutting-edge, touch-free vehicle cleaning system from PDQ, providing a safe, efficient, and affordable car wash at most stations.



EVzone

Revolutionizing EV Charging in Lebanon

A collaboration with Phoenix Energy (part of the INDEVCO Group), this project promotes electric vehicle adoption by establishing a smart charging network at strategic locations, including supermarkets, malls, hotels, and more.



Over the next three years, more than 200 charging stations will be installed, supporting a range of vehicles and advancing clean energy use.



EVzone Mobile Application

Enhancing the user experience, the app offers:

1 Easy Navigation

Interactive map for finding charging stations.

2 Flexible Charging Options

Charge by time, kWh, or amount.

3 Real-Time Updates

Monitor your session and receive notifications.

4 Secure Transactions

Payments via plastic cards or EVzone e-vouchers.

5 Exclusive Perks

Access special deals and promotions.

6 User-Friendly Process

Scan, plug in, select preference, and complete sessions easily.



Partnerships for Enhanced Experience

Convenience Stores and F&B Outlets

IPT enriches service station visits through strategic partnerships, offering high-quality services and experiences:



Dunkin'

Known for its signature coffee blends and an extensive selection of freshly baked goods, Dunkin' offers a diverse menu that caters to a wide range of tastes.

Grab'n Go

Convenience stores for quick shopping, ensuring customers can access essential items on the go.



McDonald's

Provides dine-in and drive-thru services, offering convenient meal options for travelers.

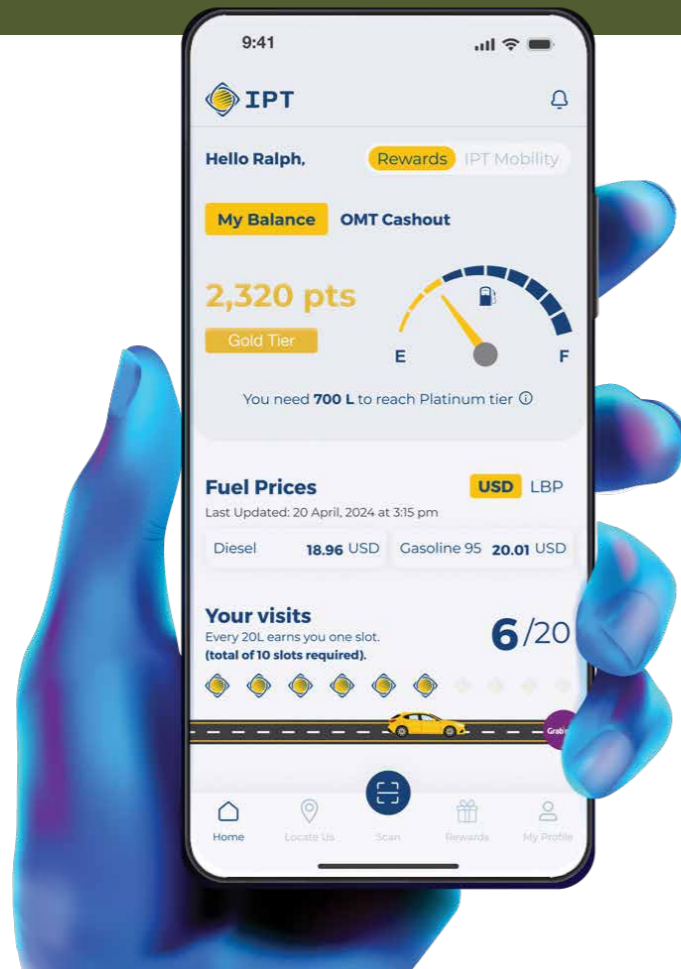
Drive-Throw In collaboration with Lebanon Waste Management, IPT promotes recycling and waste reduction with strategically placed collection points at selected IPT stations. Customers can drop off recyclables like cardboard, plastic, glass, and more, receiving payments in Lebanese Pounds or opting to donate to NGOs.



Loyalty and Digitization

IPT SMART Mobile Application Driving Innovation in Customer Loyalty and Digital Solutions

IPT is dedicated to delivering a seamless and rewarding customer experience through cutting-edge digital solutions. Our mobile app simplifies fuel management, station location, and personalized rewards access.



Key Features

Mobile App

Offers e-wallet payments, station locator, and a loyalty program with custom discounts.

Reward Program

Accumulate and redeem points with every fuel purchase for exclusive benefits.

Digital Payment Integration

Secure, flexible payment options, including OMT Pay integration, Google Pay and bank cards through tokenization.



IPT Mobility Cards Empowering Businesses with IPT's Digital Platform

IPT's Corporate spending and Payment Orchestration Platform enhances B2B financial operations, offering businesses improved control and efficiency.



Comprehensive Account Management

Easily manage corporate accounts, budgets, and transactions.

Versatile Wallet System

Supports diverse account options (prepaid, postpaid, vouchers), dual currency (LBP or USD) and digital cards issuance as well as NFC tags for better fleet control and management.

Targeted Promotions

Distribute digital or physical cards and vouchers with specific rules.

Optimized Fleet Operations

Monitor fuel consumption, manage e-vouchers, and control expenses effectively.

Data-Driven Insights

Access transaction tracking and reporting for informed decision-making.



Benefits for Businesses

Increased efficiency and reduced administrative burden

Improved control over spending and budgets

Enhanced transparency into financial data

Cost optimization and resource allocation

Accessible through a web platform and IPT Mobile Application

DOWNLOAD NOW



Corporate Services

We offer a dynamic corporate sales division that serves diverse industries. With over five decades of experience, we provide tailored energy solutions to meet the specific needs of corporate clients across sectors, including manufacturing and services and home delivery options for individual consumers.

Tailored Energy Solutions

- **Client-Centric Approach**
We understand businesses' unique challenges, enabling us to offer customized services that enhance operational efficiency and success.
- **Value-Added Services**
Our advanced fuel fleet management system allows for remote monitoring and management of fuel consumption and budgets. Flexible transportation allowances via wallet allocations provide convenience and cost-effectiveness for clients' workforces.

Nationwide Engagement

Community Commitment

IPT actively participates in national projects, bids, and tenders initiated by governmental and non-governmental organizations, underscoring our dedication to community development and societal progress.

LPG Solutions

We provide a comprehensive range of safe, efficient, and cost-effective LPG solutions, including bulk supply, cylinder and tank filling, and tailored energy solutions for industrial, commercial, and hospitality sectors. Backed by a strong infrastructure, we deliver premium-quality and reliable LPG services that power businesses with cleaner and more efficient energy.

IPT Diesel for Commercial Use

Our low-sulfur diesel, compliant with Euro 4 and Euro 5 standards, is ideal for industrial applications like power generators and heavy machinery. It reduces fuel consumption and maintenance costs, supporting businesses in achieving optimal performance and sustainability.



IPT serves over 400 corporate customers, including leading enterprises. Our fuel fleet management system and flexible wallet allocations enhance convenience and cost-effectiveness, affirming IPT's role as a reliable partner in the energy sector.

In 2023, IPT renewed its contract with TotalEnergies Marketing UAE, the operator of the fourth-largest lubricants factory in Dubai. This partnership emphasizes our dedication to providing high-quality, eco-friendly lubrication solutions. Leveraging TotalEnergies' expertise, we enhance our ELF lubricants offerings, ensuring our customers receive premium products.

In a market with sub-standard oils, IPT is committed to educating customers on the benefits of premium lubricants like ELF, which protect engines and improve performance. Our collaboration grants access to advanced technology, promoting economic efficiency and sustainability. By choosing ELF, customers ensure long-term engine health and contribute to a greener future, benefiting from better fuel economy and reduced emissions.



LPG Solutions

Our advanced LPG Terminal in Hosrayel, Lebanon, ensures seamless and efficient gas supply tailored to your needs

Full-Service LPG Solutions

Includes safe and reliable tank refilling and high-quality propane distribution

Comprehensive Service Points Access our extensive network of dedicated sales points, including service stations, for reliable and consistent gas availability.

Design and installation services

Offered by IPT for central gas systems and to all types of facilities



EQUIPT
PETROLEUM EQUIPMENT STORE

Equipment & Solutions

Under the EQUIPT brand, IPT delivers a range of petroleum equipment and solutions designed to meet the specific demands of various sectors.

SERVICE STATIONS

Comprehensive offerings: EQUIPT provides a wide selection of products, including fuel dispensers, pumps and point-of-sale (POS) systems, ensuring service stations operate efficiently and effectively.

INDUSTRIAL CLIENTS

Specialized Equipment

Tailored solutions cater to large-scale energy needs, offering equipment that enhances operational efficiency and safety.

Technological Advancements

IPT delivers innovative solutions that optimize client operations and ensure access to the latest petroleum technology.



Aviation

JETTCO

As majority shareholder with a 60% stake, IPT plays a central role in JETTCO, the Group's dedicated subsidiary for aviation fuels and services at Beirut-Rafic Hariri International Airport. This investment reflects IPT's strategy to extend its operations into specialized sectors that require uncompromising safety, technical expertise, and operational excellence.

At the airport, JETTCO ensures uninterrupted fueling for commercial airlines, private jets, and military aircraft through the supply of Jet A-1 fuel and the management of related infrastructure. IPT's involvement strengthens JETTCO's governance, compliance, and technical focus. Leveraging the Group's five decades of experience in downstream energy and logistics, JETTCO integrates IPT's high standards of safety, performance monitoring, and customer service into its aviation activities. This partnership ensures that the same culture of reliability which defines IPT on the ground is extended into the air.

Over more than three decades of operations, JETTCO has earned the trust of international and regional carriers, private jet operators, and institutional clients. With IPT's majority stake, the company is now even better placed to deliver scalable solutions and maintain its reputation as a reliable, safety-driven aviation services provider.

As part of IPT Group, JETTCO illustrates our ability to diversify, to operate in highly regulated industries, and to build partnerships that extend beyond traditional energy markets. It reinforces our positioning as a comprehensive energy partner for the region, one that supports mobility on land and in the skies



Renewable Energy

IPT is committed to sustainable energy solutions, actively investing in the renewable sector. IPT Solar offers photovoltaic system installation and maintenance for both commercial and residential clients, aiming to reduce reliance on fossil fuels and promote clean energy.

Operational Efficiency *and* Safety Standards



Transportation

IPT's transportation network is foundational to our operational efficiency and includes:

Fleet Composition

Our diverse fleet of over sixty tank trucks, trailers, and specialized vehicles meets specific logistical needs.

Technology Integration

Vehicles are equipped with advanced GPS tracking and telematics systems, ensuring timely, safe deliveries and providing real-time data for efficient route and fleet management.

Maintenance and Safety

We follow strict maintenance schedules to comply with safety standards. Drivers receive comprehensive training in defensive driving and emergency response, highlighting IPT's commitment to safety.

Distribution



Our distribution systems enhance supply chain integrity and customer satisfaction:

Logistics Management

Advanced logistics software optimizes the supply chain from source to consumer, improving delivery efficiency and cost-effectiveness.

Safety Protocols

We enforce strict safety protocols during loading, transportation, and unloading to prevent accidents and ensure product and personnel safety.

Compliance and Auditing

Regular audits ensure our distribution aligns with local and international standards, supporting safety and environmental responsibility.



Quality, Health, Safety, and Environmental (QHSE)

IPT prioritizes quality, health, safety, and environmental sustainability, holding ISO 9001, ISO 14001, and ISO 45001 certifications:

Employee Training

Continuous training is provided for all employees, fostering a proactive safety culture. This includes regular safety drills, mandatory PPE usage, and thorough emergency response preparedness.

Environmental Commitment

IPT is dedicated to reducing waste, promoting recycling, and adopting green technologies to minimize its environmental impact. These efforts are supported by an Integrated Management System (IMS) that integrates Quality, Health, Safety, and Environment (QHSE) standards with Environmental, Social, and Governance (ESG) principles, ensuring a comprehensive and sustainable approach to operations.

Operational Safety

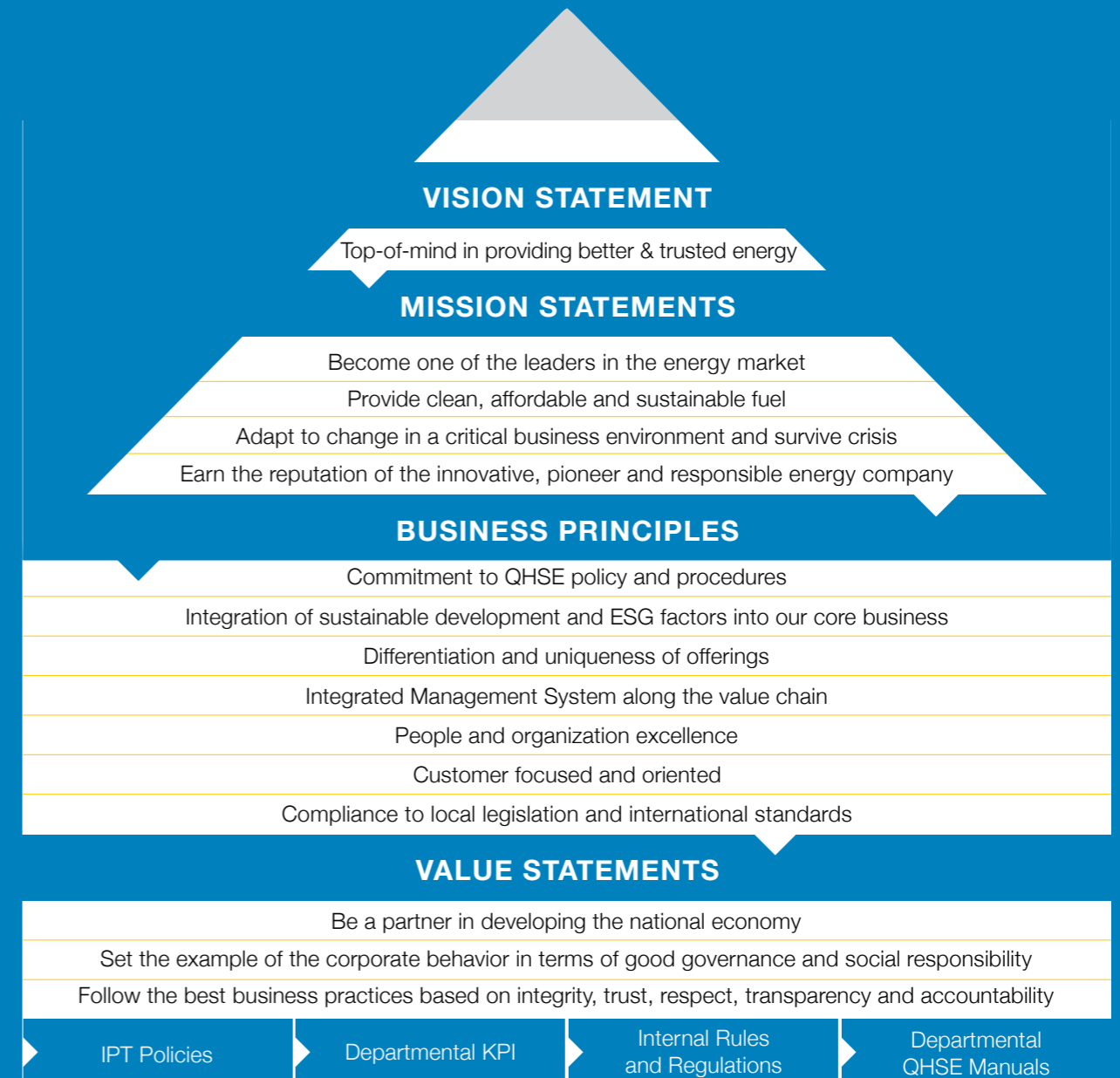
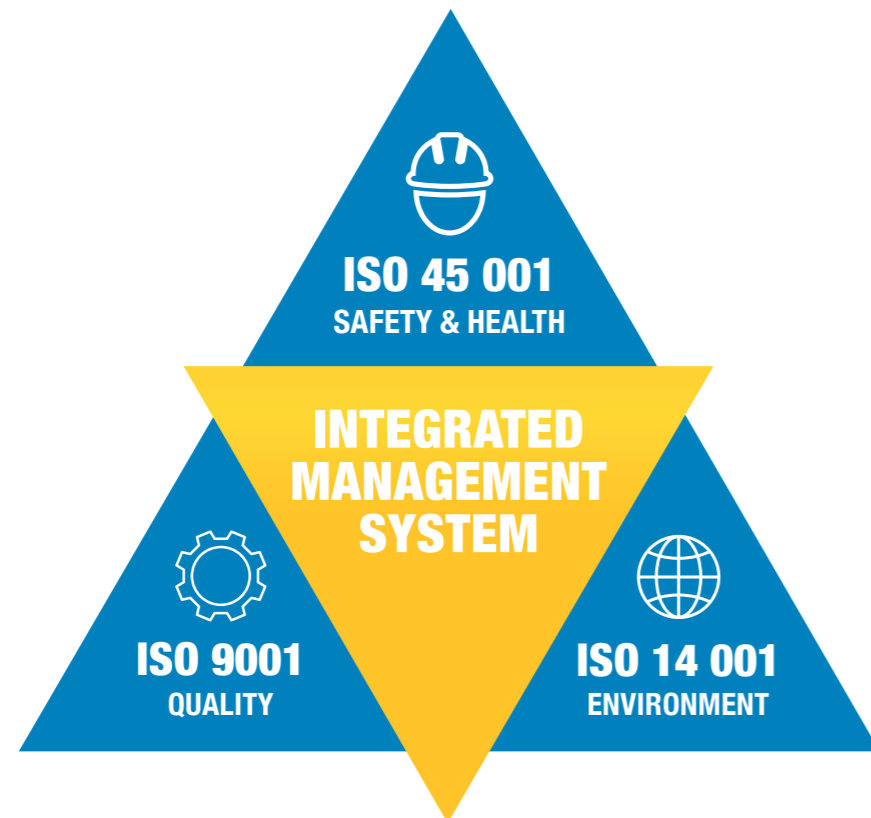
Significant investment in safety training and a detailed Disaster Response Plan (DRP) underscores our safety commitment. Regular drills ensure proficiency in safety protocols.

Risk Management

Risk management is prioritized across all departments. Thorough assessments and action plans are developed with the Corporate Governance Department to minimize and mitigate risks effectively.

Service Station Safety

IPT service stations meet high safety standards, with risk assessments conducted in collaboration with Bureau Veritas, ensuring safe, responsible operations.



Regional Expansion

United Arab Emirates (UAE)

In 2020, IPT began its regional expansion by establishing IPT Energy Power Trading LLC in the UAE, focusing on high-quality energy solutions, including 10 ppm diesel, biodiesel distribution, bulk trading, lubricants, and fuel oil supply.



STORAGE AND DISTRIBUTION

Mainland UAE - Sajja, Sharjah

IPT acquired and upgraded a storage facility in Sajja, Sharjah, to meet health and safety standards. This facility, with a 2-million-liter capacity, stores 10PPM diesel per UAE specifications, enabling B2B distribution across the UAE. Our fleet of over 25 trucks ensures flexible and reliable service. IPT is an authorized reseller of TotalEnergies lubricants and a preferred 10PPM diesel supplier in the UAE.

Innovation and Sustainability

IPT has introduced several innovative and sustainable initiatives to enhance operational efficiency and environmental responsibility.

Fuel Your Fleet: Offers on-site diesel fueling for corporate fleets across the UAE with a digital fuel management system to enhance efficiency and control consumption.

Excellium Pro Concentrate: An additive by TotalEnergies that improves fuel efficiency, reduces maintenance costs, and lowers emissions.

Neutral Fuels: Collaboration with a leading biofuel producer allows us to offer premium biodiesel to reduce carbon emissions.

Dubai Industrial City

IPT has acquired a 100,000-square-foot plot in Dubai Industrial City for expanding distribution operations. This facility will house our fleet and offer a commercial truck service center, including diesel filling, truck washing, and quick services. A small diesel station with storage tanks is also planned.

STORAGE AND TRADING

Hamriyah Free Zone

IPT acquired a terminal with an 84,000 CBM capacity for storing diesel, gasoline, naphtha, jet fuel, and chemicals.

This facility enhances our supply chain for local distribution and expands our regional trading activities, solidifying our role in storage and logistics.

Kingdom of Saudi Arabia (KSA)

IPT Energy KSA anchors the Group's strategic entry into the Kingdom, aligned with Vision 2030 and built on five decades of downstream operating excellence.

Through partnerships with leading market operators, we are introducing IPT's standards in service quality, safety, and customer experience.



STRATEGIC PARTNERSHIP

Operates under a strategic operating partnership with Tas'helat Marketing Company (TMC) - ARAMCO and TotalEnergies Joint Venture, managing select service stations.

OPERATING MODEL

Management and operation of select service stations with unified SOPs and brand standards.

We aim to reposition stations as neighborhood mobility and convenience hubs, integrating quality retail, quick-service F&B, essential services, and digital customer touchpoints for an enhanced customer experience.

CUSTOMER & DIGITAL

Rollout of fleet payment and loyalty capabilities to elevate convenience and transparency.

HSE & QUALITY

Best-practice safety culture, compliance, and continuous performance monitoring.

SUSTAINABILITY

Efficiency upgrades and readiness for future low-carbon mobility solutions.

FUTURE MOBILITY

EV charging-ready sites with a roadmap for destination charging.



Kingdom of Jordan

IPT is extending its regional footprint into Jordan under a performance-driven operating model in collaboration with TotalEnergie Marketing Jordan.

Our focus is on reliable forecourt operations, consistent service, and measurable value for partners and customers.



STRATEGIC PARTNERSHIP

Operating via a strategic partnership with TotalEnergies Marketing Jordan.

OPERATIONAL EXCELLENCE

Standardized station management, disciplined controls, and retail best practices.

CUSTOMER SOLUTIONS

Fleet and loyalty tools that enhance engagement and drive repeat visitation.

HSE FIRST

Strong safety governance embedded across daily operations.

EFFICIENCY & IMPACT

Practical energy-saving measures and responsible resource management.

FUTURE MOBILITY

EV charging-ready layouts and infrastructure planning on select service stations.



Our Sustainability

Our Approach

At IPT Lebanon, we are committed to building a sustainable and responsible future. Our sustainability approach is rooted in a belief that businesses play a pivotal role in creating positive societal and environmental impacts. In this regard, IPT is working on a transforming journey from an oil company to an energy company.

Sustainability Pledge

Sustainability at IPT is a fundamental responsibility that shapes our business decisions and practices, guiding us to reduce our environmental footprint, enhance community well-being, and uphold ethical standards. We have established a sustainability committee and launched a CSR policy to steer these commitments. Through comprehensive internal and external consultations, we identified material sustainability issues based on their potential to create value and impact stakeholders. This prioritization enables us to allocate resources effectively toward the most significant topics. Moving forward, we will continue to monitor and transparently report on our ESG materiality and KPIs to ensure accountability and demonstrate progress.

United Nations Global Compact - UNGC

Since 2018, IPT has proudly participated in the United Nations Global Compact, embracing its universal principles on human rights, labor, environment, and anti-corruption. We integrate these principles into our daily operations to positively impact both our organization and the communities we serve.

Sustainable Development Goals – SDG

Aligned with the UN Sustainable Development Goals, IPT focuses on SDGs 7, 9, 11, and 13, while also supporting SDGs 3, 5, 8, 12, 14, 15, and 17 through responsible business practices. In 2024, we joined the UNGC Network Lebanon's #ForwardFaster initiative, committing to action on gender equality and living wage, in line with SDGs 5 and 8. Our sustainability programs, from clean energy projects to community empowerment, directly support these goals. At IPT, real change starts within, driving an inclusive, fair, and sustainable future.



ESG Framework

IPT adopts a structured ESG framework that integrates environmental stewardship, social responsibility, and strong governance across its operations, enabling transparent measurement and continuous improvement of our impact.

ISO 26000– Social Responsibility

We apply the ISO 26000 international standard to embed ethical and socially responsible practices throughout our operations, continuously monitoring and addressing gaps to support stakeholder well-being and societal progress.

CORPORATE CULTURE

To integrate a culture of sustainability:

Committees and Governance

A dedicated committee oversees sustainability efforts, ensuring alignment with goals and accountability.

Cultural Evolution

We promote innovation and responsibility within our workforce to meet sustainability objectives.

Sustainability Unit

A dedicated unit orchestrates and leads relevant activities, fostering both internal and external engagement, measuring and reporting annually on our KPIs.

Building on our foundational sustainability efforts, we are proud to drive a series of forward-thinking projects and metrics that underscore our commitment to a better future.

As IPT Group continues to champion sustainability, our dedication to innovation and strategic strides to embed the culture is projected in the four pillars as guidelines extracted from our materiality while engaging stakeholders.



Four Pillars of Commitment

GOVERNANCE, QUALITY, HEALTH, AND SAFETY

- Uphold top QHSE standards to protect employee:
 - Emergency Maneuvers
 - Continuous safety training
 - Health awareness campaigns
- Foster a culture of safety and compliance:
 - Civil Defense support
 - Leadership development
 - Supplier support

ENERGY AND ENVIRONMENTAL MANAGEMENT

IPT Energy Center (IPTEC)

A research institution focused on energy, environment, and transportation. Its mission is to drive scientific innovation, promote awareness, and advance sustainable, clean energy solutions by optimizing energy use and reducing environmental impacts.

Greenhouse Gas Protocol Adherence

We proudly released Lebanon's first Greenhouse Gas (GHG) Report in the oil and gas sector, externally audited and certified under the GHG Protocol for enhanced transparency. The report covers emissions across scopes 1, 2, and 3, including fleet operations, energy consumption, and work-related travel. This comprehensive audit reinforces our commitment to monitoring and managing our carbon footprint, as we aim to reduce and avoid emissions through renewable energy and efficiency initiatives.

Renewable Energy Projects

Many of our stations operate on solar power, generating clean energy to support a more sustainable future, with the goal of transitioning all stations to renewable energy sources.

Eco-Friendly Products

We offer Quantum Gasoline and IPT Diesel to reduce emissions and consumption.

Sustainable Stations

IPT built Lebanon's first Sustainable Station in Amchit, showcasing advanced technologies for energy efficiency, water conservation, pollution prevention, and green landscaping, setting a new standard for sustainable fuel retail.

Innovative Partnerships

Collaboration is at the heart of our sustainability strategy. Working with partners like UNDP, UNGC, Lebanon Waste Management, AUB-NCC, and Phoenix Energy, we deliver impactful programs in waste management, clean energy, education, and community empowerment. These partnerships, aligned with SDG 17, help us scale solutions and drive meaningful progress.

Waste Management

In line with ISO 14001 standards, we maintain clear KPIs to monitor and improve our waste management practices, ensuring compliance and driving continuous progress. These indicators are reviewed and reported annually to support transparency and accountability in reducing our environmental impact.

Water Efficiency

Through targeted initiatives, we continuously improve water consumption reduction with specialized filtered sewage systems, rainwater treatment for reuse, and regular measurement for responsible management.



ENRICHING THE LOCAL COMMUNITY



Michel Issa Foundation
For Local Development

Michel Issa Foundation (MIF)

Supports social initiatives in education, healthcare, and community development.

Infrastructure Initiatives

Community based contributions with selective partners.

Cultural and Community Initiatives

Sponsoring and upholding traditional festivals. Empower local communities and promote development.

Volunteer Program

Empowers employees to engage in meaningful causes across elderly care, orphan support, and environmental sustainability. This initiative strengthens IPT's culture of compassion and community engagement, reinforcing our commitment to corporate social responsibility and lasting positive change.



HUMAN CAPITAL EXCELLENCE

- Prioritize employee development with training and diversity initiatives.
- Focus on leadership training and gender equality.
- Nurture talent for future growth.
- Succession planning.
- Work life balance.



Expanding Horizons for a Sustainable Future



Sustainability Metrics & Reporting

As IPT Group continues to champion sustainability, our dedication to innovation and environmental stewardship remains at the forefront of our strategic initiatives. Building on our foundational sustainability efforts, we are proud to introduce a series of forward-thinking projects and metrics that underscore our commitment to a greener future.

Global Reporting Initiative (GRI)

Our sustainability report follows GRI standards, providing clear and reliable information in accordance with relevant indicators.

ISO Certifications

We hold ISO 9001, ISO 14001, and ISO 45001 certifications, highlighting our commitment to quality, environmental, and occupational health and safety management.



UN Global Compact

We align our operations with the core principles of human rights, labor, the environment, and anti-corruption.



WE SUPPORT

By adhering to these frameworks, IPT Group demonstrates its commitment to sustainable development and ensures continuous improvement in environmental and social practices.

Future Outlook

IPT is committed to embedding sustainability into all operations to create lasting value for customers, communities, and the environment. In pursuit of this goal, we aim to launch green projects that focus on sustainability and innovation, while setting long-term objectives for emission reduction and renewable energy adoption. By cultivating strategic partnerships, we strive to enhance our environmental impact and ensure continuous improvement in our practices. Through these efforts, IPT is dedicated to leading the way in sustainable energy, enriching local communities, and fostering human capital excellence, all while maintaining high standards for quality, health, safety and environment.



Partnerships *and* Recognition

Strategic partnerships are vital to IPT Group's innovation and success:

Industry Collaborations

Working with global energy leaders enhances our technology and service offerings, providing cutting-edge solutions to clients.

Academic Alliances

Partnering with institutions fosters energy-efficient research, ensuring a pipeline of skilled professionals and innovative ideas.

Government and NGO Alliances

Collaborations drive sustainable projects and community initiatives, supporting local development and conservation efforts.



Awards *and* Certifications

IPT's excellence is recognized through several prestigious awards:

Award for Excellence in Lubricants Distribution 2025

IPT received the "Best Distributor of ELF Lubricants in the Middle East region - Silver Category" from TotalEnergies Marketing Middle East, honoring its exceptional growth in Lebanon during a regional ceremony held in Brussels.



Energy Ambassador of the Year 2019

Awarded to Dr. Toni M. Issa by the International Beirut Energy Forum, emphasizing IPT's influence in the energy sector.



Forbes-Lebanon 100 Award 2018

Presented by Forbes Middle East to Dr. Toni M. Issa for being among the top business leaders influencing Lebanon's economy.



National Green Certificate 2013

Awarded by the Ministry of Environment for efforts in reducing air pollution.



SEA Award 2012

Recognized for public awareness initiatives by the Social Economical Award.



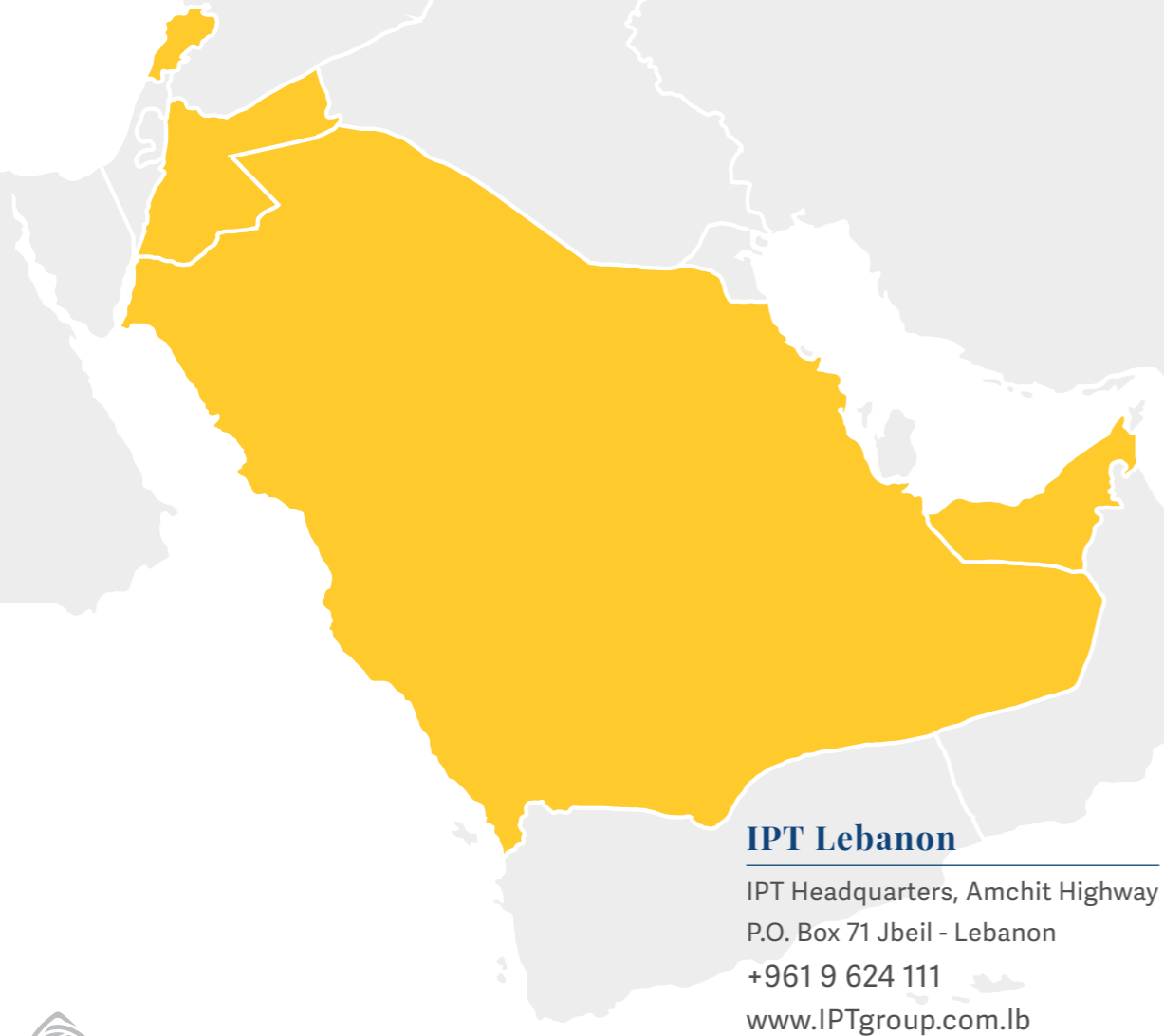
Rebrand 100 Global Award 2011

Acknowledged among the top 100 companies worldwide for brand excellence.



CONTACT US

IPT delivers a unified promise: safe operations, trusted service, and data-driven performance that support mobility and economic activity across the GCC and Levant. We are dedicated to providing reliable energy solutions, enhancing customer experience, and fostering partnerships that create long-term value. For inquiries about our services, sustainable initiatives, or regional business opportunities, please contact our team. We are committed to serving communities, supporting partners, and shaping the future of energy together.



Learn more about IPT Group

IPT Headquarters, Amchit Highway, Lebanon
 Tel +961 9 624 111 | Fax +961 9 624 115 | www.iptgroup.com.lb



